

Yakima County Fire District 12 (West Valley Fire)

• About Us

- Yakima County Fire District 12 is a combination fire department with 94 dedicated citizens that are on-call members supported by six full time members (Chief, Administration and Finance Officer, Training Captain, Training Lieutenant and two Firefighters) that respond to all risks within our 90 square miles from four fire stations protecting a population of 14,155 citizens.

• What We Do

- Provide Public Education in Fire Prevention and Life Safety
- Fire Suppression to save lives and minimize property damage
- Fire Investigation, cause and origin to improve life safety
- Rescue/Extrication to save lives
- Emergency Medical Services, BLS first response
- Hazardous Materials Emergency Response for life safety
- Emergency/Disaster Management using the Incident Command System
- Administrative Services, human resources, accounting and administrative
- Support Services, maintaining buildings and equipment
- Member Safety through a safety committee and training



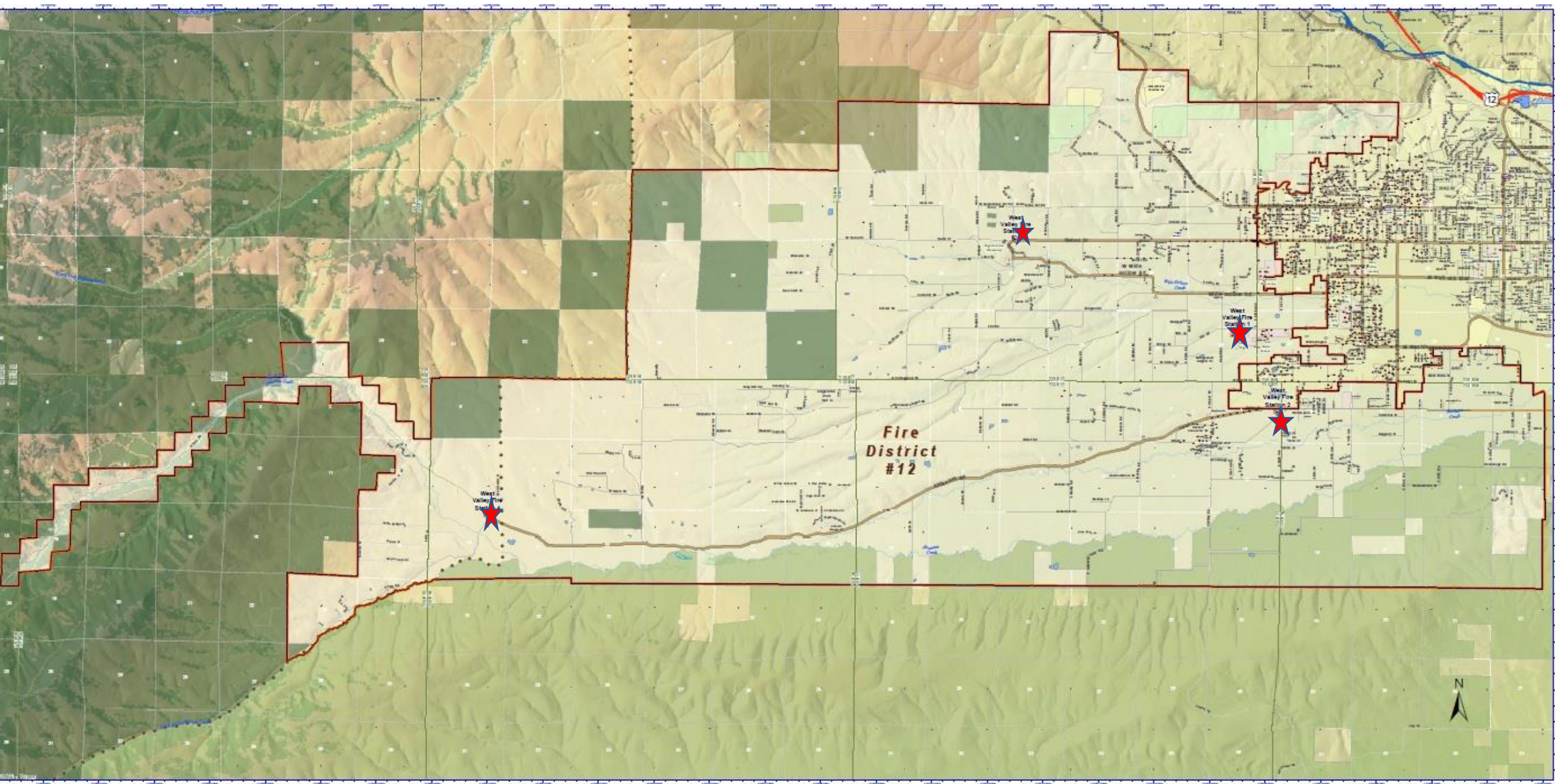
Who Protects Your Property?

While West Valley Fire Department maintains automatic aid agreements for closest response with Fire District 1 & 6 and the Cities of Yakima & Union Gap, the fire station you think is closest to you may not be your responding station. An example of this is properties across the street from Station 52 (9102 Ahtanum) are inside the city limits and will receive a response from a city fire station.

If you are unsure if your property is within the Fire District boundaries you can look at your County tax statement to see if you are paying Fire District 12 taxes or you can look up your property on the County Assessor web site and click on Tax Code Area for a breakdown of where your property taxes are going. If you are in Fire District 12 you will see you pay \$1.27/\$1000 of assessed value to the District.

FIRE - RESCUE

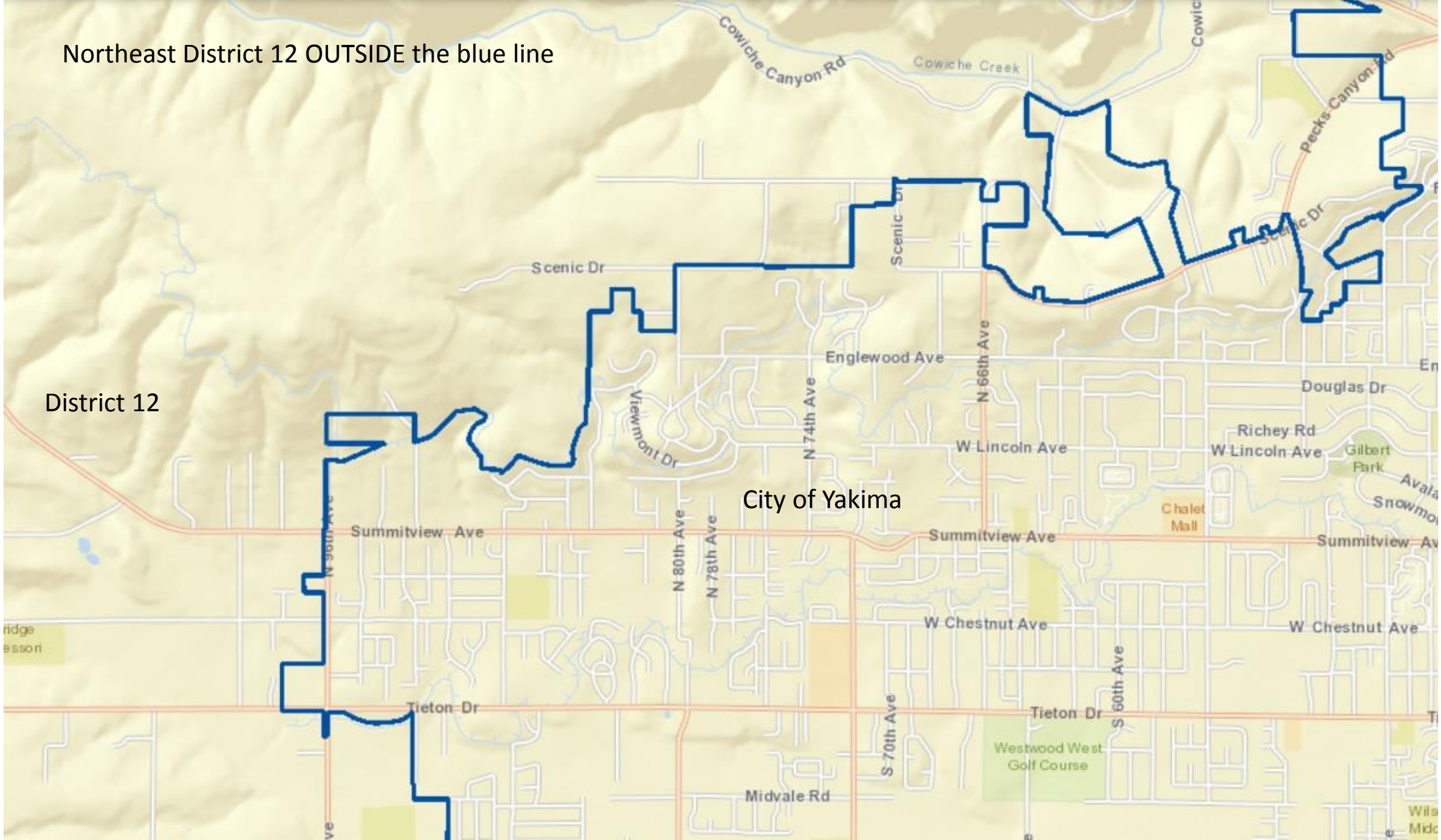
District 12 Boundary- Inside the red outline, stars are station locations



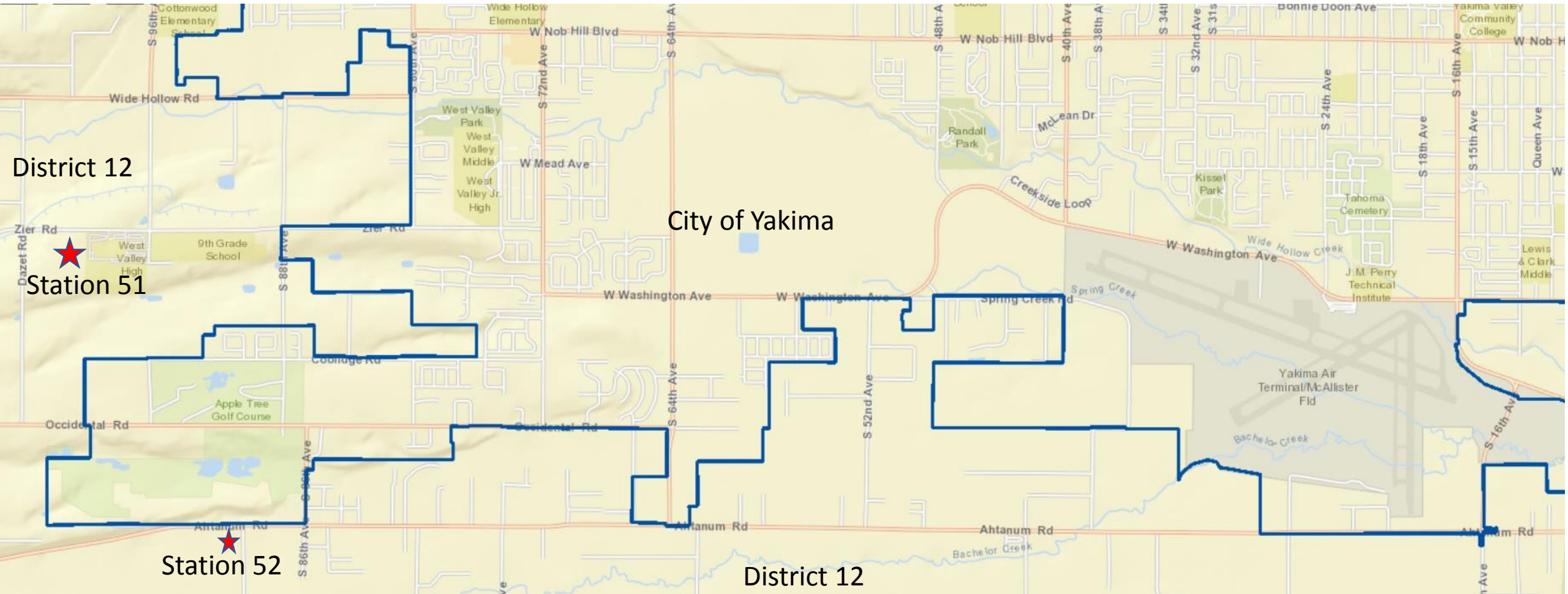
Northeast District 12 OUTSIDE the blue line

District 12

City of Yakima



Southeast District 12 OUTSIDE the blue line



Service Boundary Description

On Ahtanum Road we start at 32nd Ave and go west to Tampico. From 32nd Ave to around 100th Ave all property south of Ahtanum to the Reservation is in the District, the north side of Ahtanum is mixed with some District and some City of Yakima.

Eastern Boundary: Occidental and 98th, Coolidge and 78th (North of Coolidge mostly), Zier & 88th Ave, Wide Hollow and 80th Ave (some north side of W.H. all south side), Tieton Drive and 96th Ave, Summitview & 96th Ave, Scenic Drive & 80th Ave, Cowiche Canyon and 62nd Ave.

Northern Boundary: Summitview and Pioneer Way, Off the end of Tieton Drive to the elk fence.

West: we respond up both the North and South Fork Rd to the end of the pavement